



In the past year StreetsLA, Urban Forest Division, has begun a citywide inventory of our street trees, planted 230 trees as part of the new Guaranteed Tree Planting program, planted over 1,300 trees, trimmed 36,497 trees, removed 2,571 trees, removed 3,339 stumps, and provided watering services for approximately 6,000 trees.



StreetsLA is supporting the Office of Forest Management and the development of the Urban Forest Management Plan and has made the inclusion of trees a standard component of Urban Cooling Projects as part of our policy of providing holistic integrated solutions.



TREE SUMMIT LA
RESILIENCY: FORESIGHT IS 2020



PARK PROUD LA

More Inventory News:

The Department of Recreation and Parks participated in a pilot study using a multi-spectrum camera drone fly-over of Elysian Park. The draft report is currently under review.

The **Department of Recreation and Parks** has been planting and inventorying trees throughout the City of Los Angeles:
CalFire Grant: 695 of 680 trees planted (102%), 85% by volunteers
Inventory: 61,317 Trees at 197 of 551 Parks (36%)
Inventory: 4,331 of 16,081 Acres (27%)



TREE SUMMIT LA
RESILIENCY: FORESIGHT IS 2020

Sidewalk Repair Program

Core Mission: Improve Mobility in Los Angeles by making Sidewalks and Ramps Accessible for All

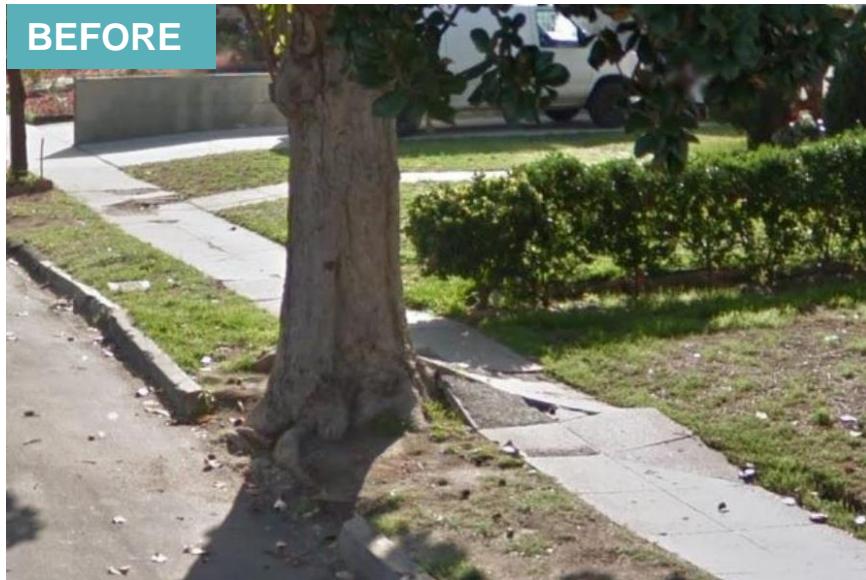
July 2016 – Apr 2020

1,550 Sites Repaired

86 Miles of Sidewalk

1,905 Curb Ramps

* Miles of 5 foot equivalent sidewalk



City policy is directed toward the preservation of all street trees

- Over 4,200 Trees Preserved
- Over 1,300 Trees Planted



TREE SUMMIT LA
RESILIENCY: FORESIGHT IS 2020

LA DWP Los Angeles Department of Water & Power

- LADWP Energy Efficiency Solutions funds the 20,000 trees planted, delivered, and distributed to Angelenos through City Plants each year.
- All LADWP provided trees are now saving **6.3 GWh/yr** and avoiding and sequestering over **4,000 metric tons of CO²/yr.**



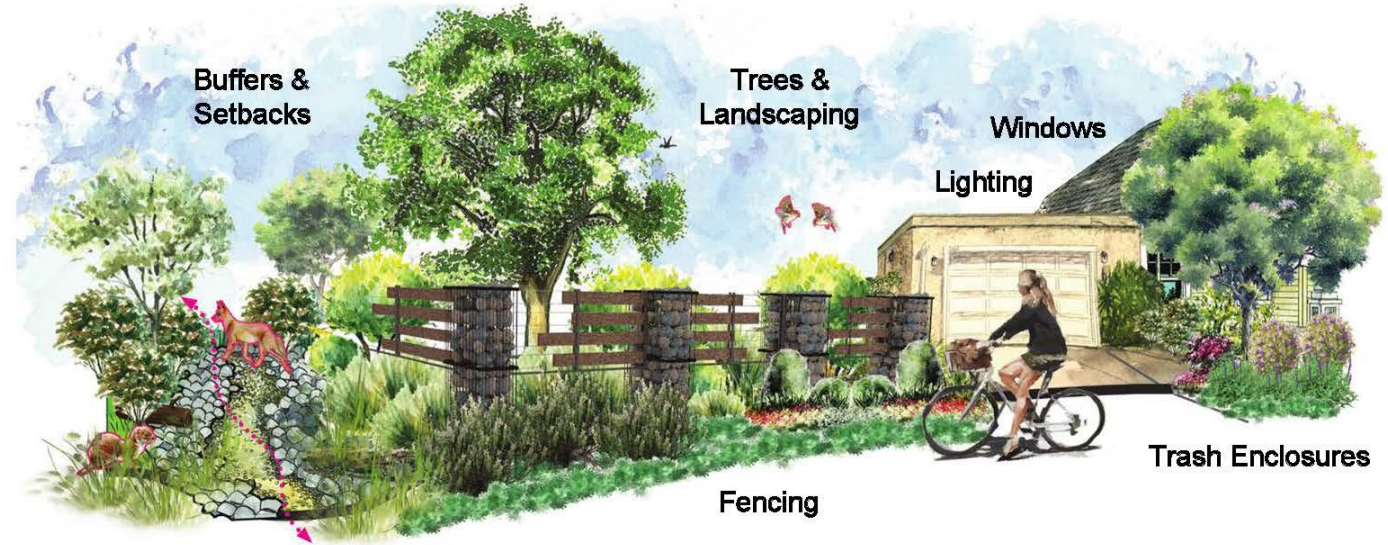
TREE SUMMIT LA
RESILIENCY: FORESIGHT IS 2020



**LOS ANGELES
CITY PLANNING**

The Department of City Planning (DCP) is carrying out the Wildlife Pilot Study, which will result in a series of regulations for new development within the eastern Santa Monica Mountains to address habitat and connectivity for wildlife (including setbacks from resources, such as significant trees, which will broaden protections for mature trees).

How Can Planning Help Enhance Wildlife Habitat & Connectivity?



TREE SUMMIT LA
RESILIENCY: FORESIGHT IS 2020



LASAN & Environment Street Tree Planting

Vermont Corridor

\$750,000 – 1,847 Trees

Greater Greener LA

\$1,000,000 – 1,936 Trees

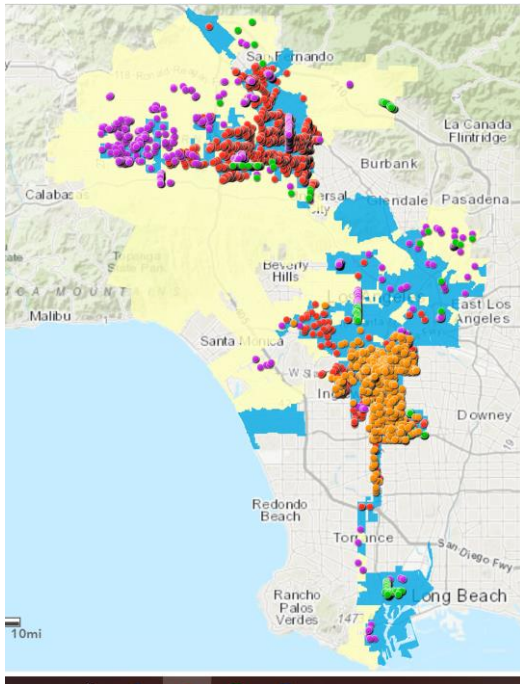
SHADE LA

\$1,500,000 – 1,021 Trees

TREEmendous

\$1,500,000 – 484 Trees

TOTAL: \$4.75 million – 5,288 Trees Planted



Blue: AB 1550 Disadvantaged Communities

Yellow: City of LA



TREE SUMMIT LA
RESILIENCY: FORESIGHT IS 2020



Special Thanks to Our Funders



ARBOR DAY

Arbor Day by the Numbers:

Banning Park Trees – 114

Wilmington Street Trees – 251

Adopted Trees – 294

Total Trees – 659

Concrete Cuts for Tree Wells – 236

Volunteers - 404



TREE SUMMIT LA
RESILIENCY: FORESIGHT IS 2020